

# PROLOGIS NASHVILLE NORTH 4

1125 VAUGHN PARKWAY  
PORTLAND, TENNESSEE



Located in Northwest Portland off I-65 at  
the Tennessee/Kentucky State line



# Nashville North 4

504,000 sf



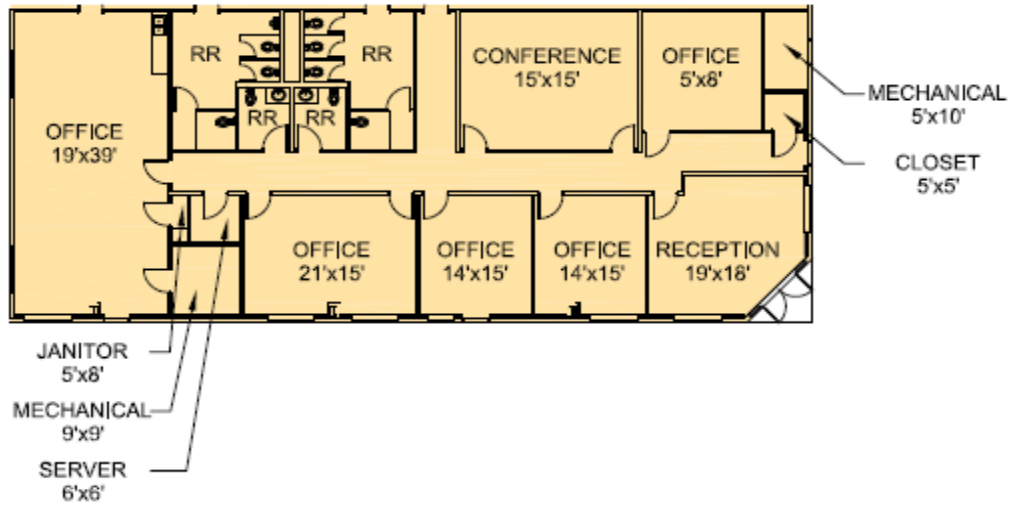
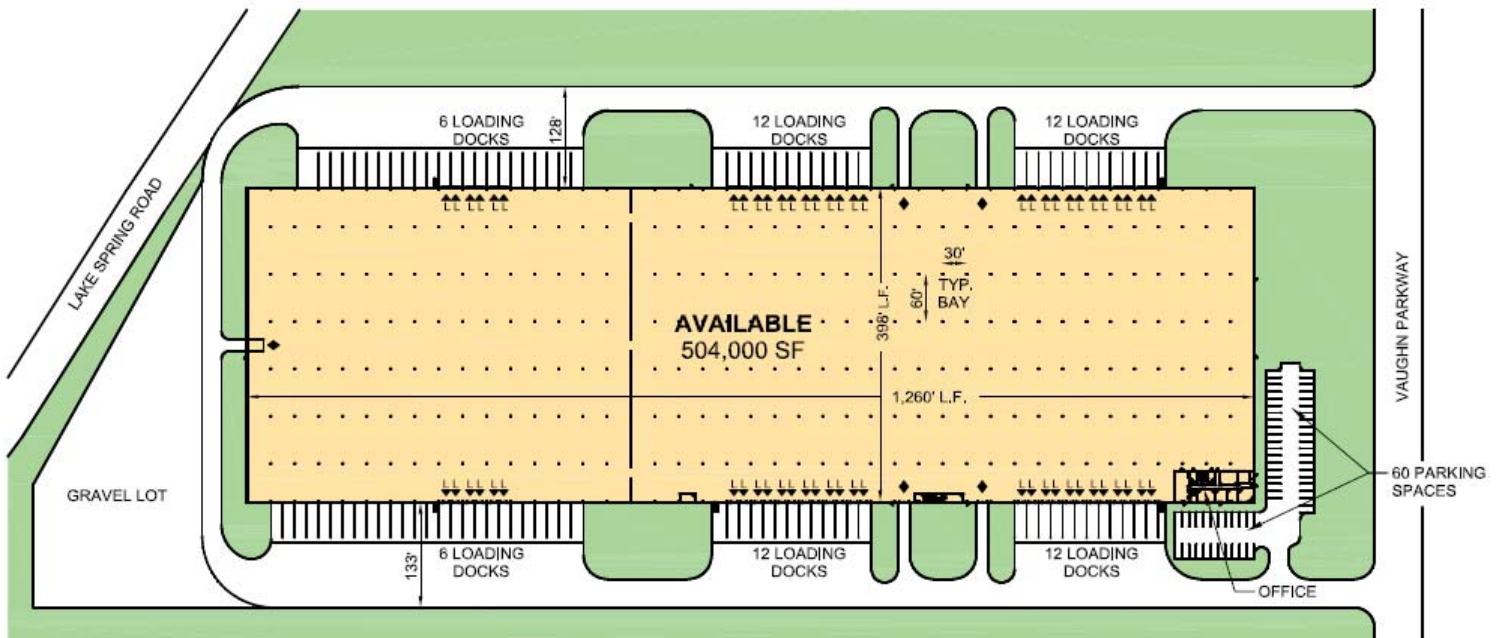
## Building Features

- 504,000 SF Building
- Up to 504,000 SF Available
- 4,871 SF Total office space consisting of:
  - 3,972 SF Main office
  - 679 SF Shipping office
  - 220 SF Break room
- 60 Dock doors with 30,000 lb. hydraulic pit levelers, automatic doors, lights and door seals (additional doors may be available)
- 5 (14' x 16') Grade level doors
- T-5 Lights with motion sensors
- ESRF
- Building dimensions: 400' x 1,260'
- Typical 60' x 30' column spacing
- 32' Minimum clear height
- 1,000 amp, 480 volt, 3 phase power
- Up to 143 car parking spaces
- Up to +/- 100 trailer parking spaces
- 130' Truck court with concrete apron
- Real Estate Tax Abatement through 2023

## Corporate Neighbors

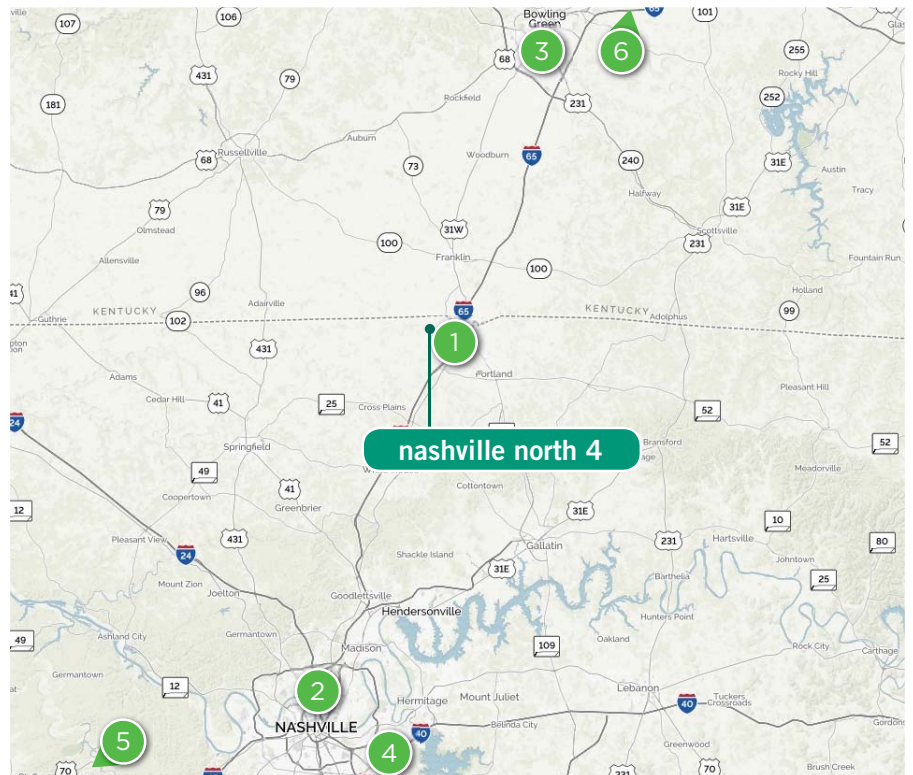






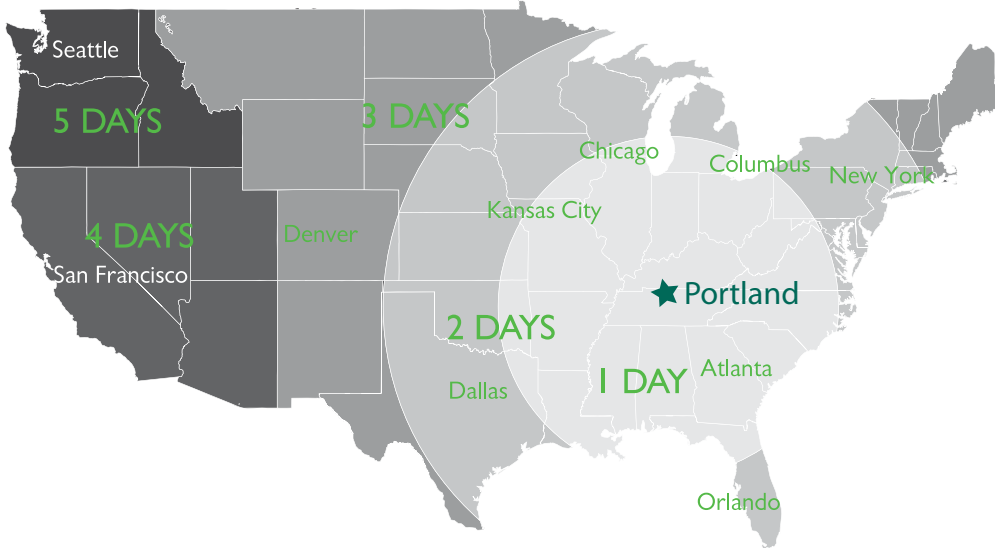
### Drive Times / Access by Minutes

- 1 1 minute from Interstate 65
- 2 40 minutes from Nashville
- 3 40 minutes from Bowling Green
- 4 48 minutes from Nashville International Airport
- 5 3 Hours 50 minutes (245 mi) from FedEx in Memphis
- 6 2 Hours 46 minutes (146 mi) from UPS in Louisville





## Truck Transit from Portland to Anywhere in the U.S.



### Contact Us

Cushman & Wakefield

John Ward, SIOR

[john.ward@cushwake.com](mailto:john.ward@cushwake.com)

Abigail Palmquist

[abigail.palmquist@cushwake.com](mailto:abigail.palmquist@cushwake.com)

Main: + 1 615 301 2800

[www.cushwake.com](http://www.cushwake.com)

Prologis

Tanner Hicklin

Vice President, Market Officer

[thicklin@prologis.com](mailto:thicklin@prologis.com)

Main: + 1 615 377 5890